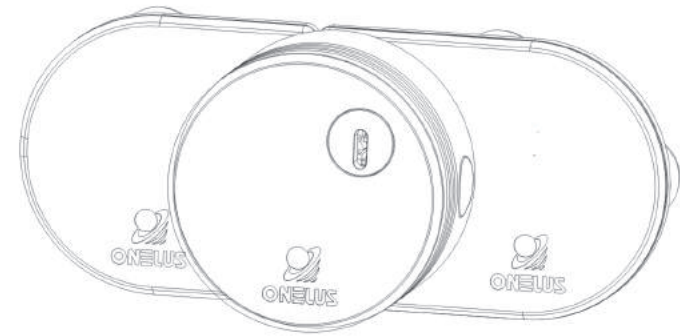
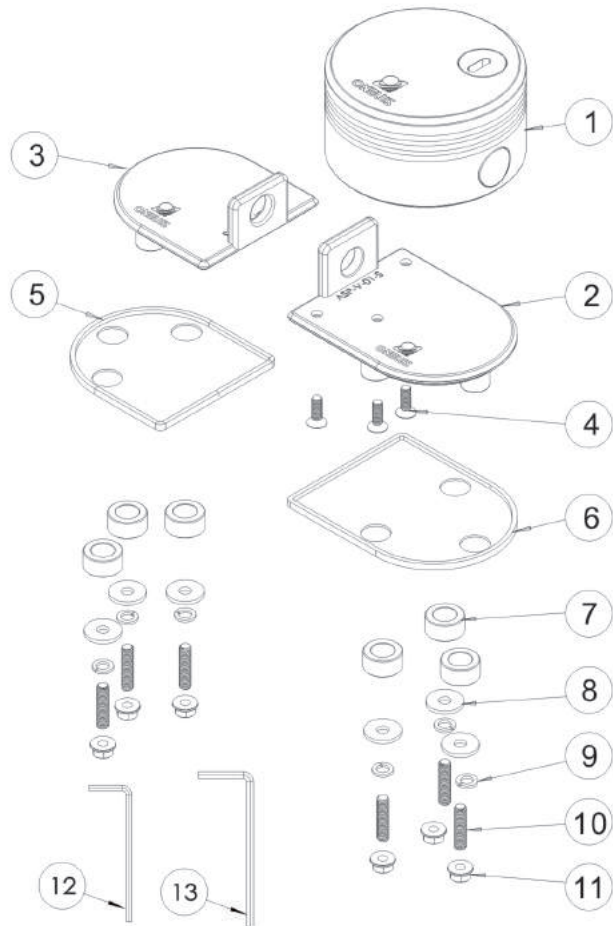
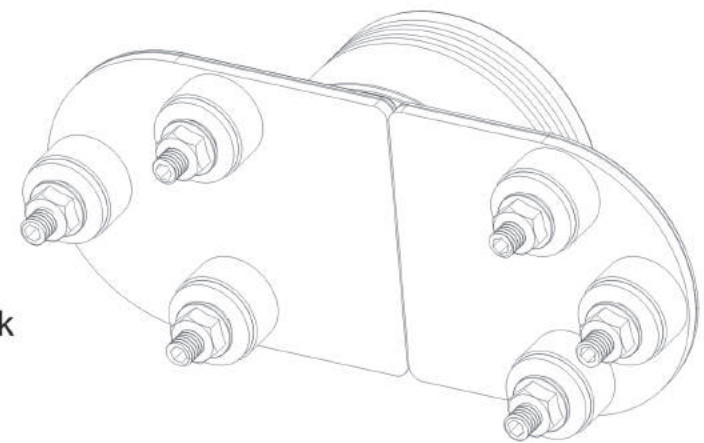


# Installation Manual - WIC-V-01

# WIC-V-01

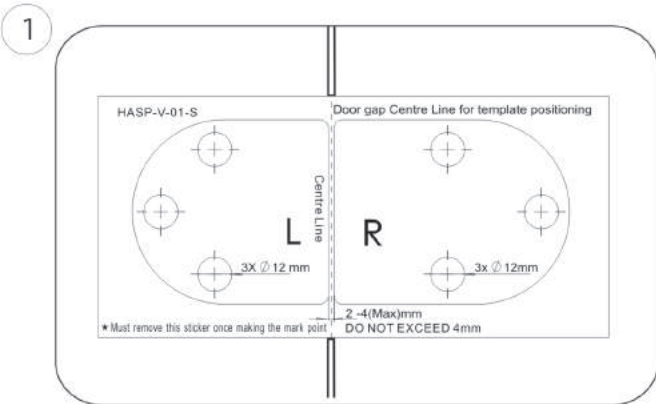


Front

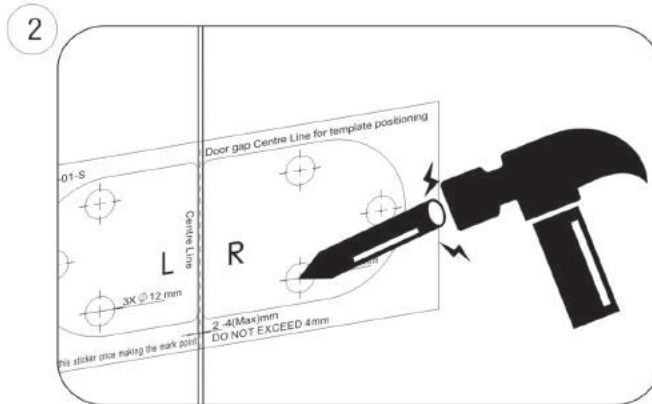


Back

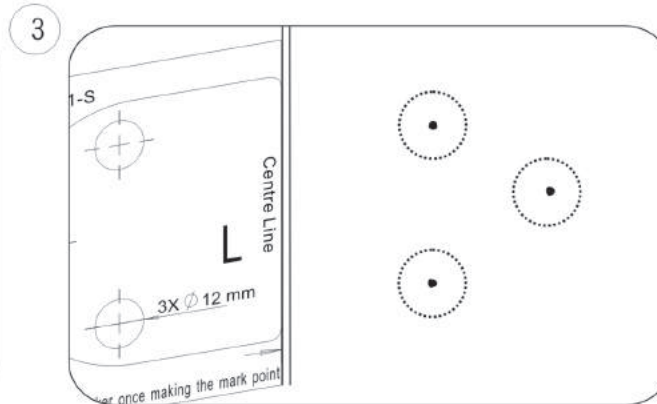
NO	Item	Qty	NO	Item	Qty
1	WIC - LOCK BODY	1	7	Grommet - 20*10mmL	6
2	Right HASP-V-01	1	8	Washer - M6 19*2mmL	6
3	Left HASP-V-01	1	9	Spring Washer - M6	6
4	Countersunk Hex. Screws - M4*16mmL	3	10	Socket Set Screws - M6*25mmL	6
5	Rubber Gasket of Left HASP-V-01	1	11	Flanged Nut - M6	6
6	Rubber Gasket of Right HASP-V01	1	12	Hex. Key - M4	1
			13	Hex. Key - M6	1



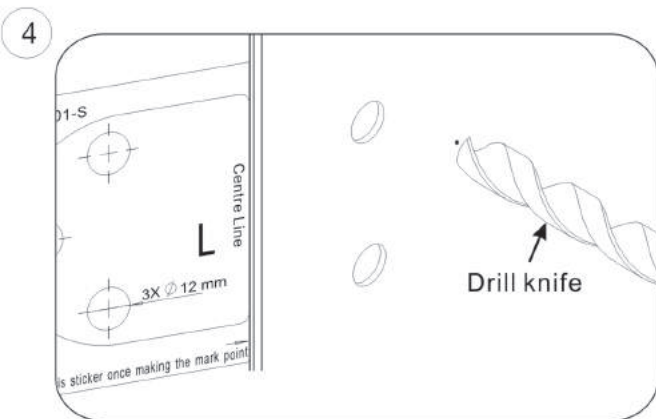
Stick the "Drilling Template" on the object



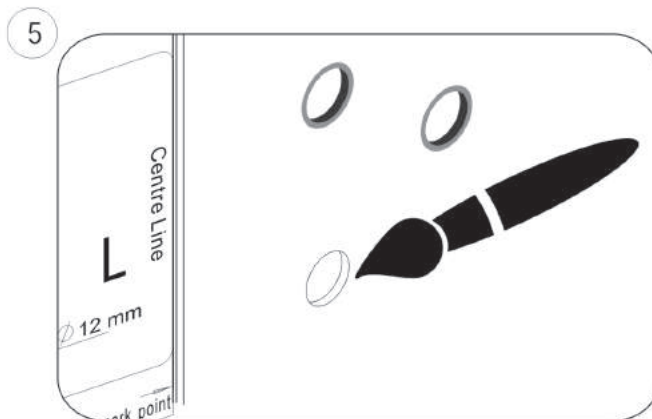
Use steel nail to remark on the cross point



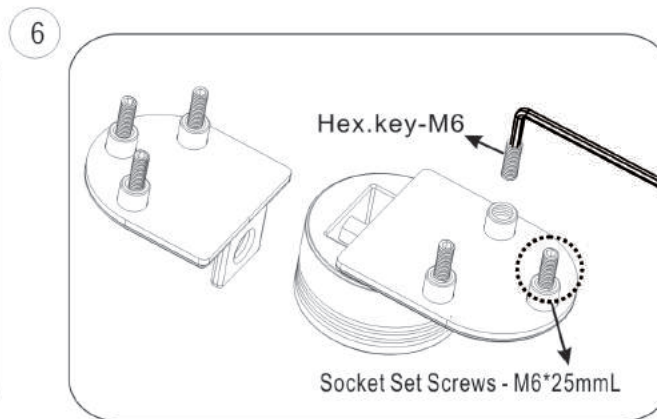
Remove the sticker after remarking



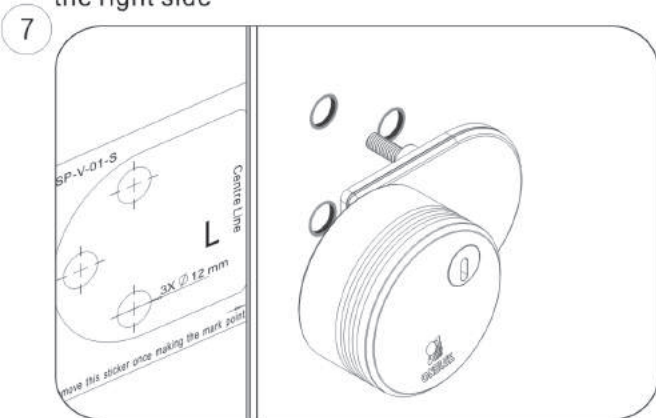
Use drill knife at  $\phi 12\text{mm}$  to drill the 3 holes at the right side



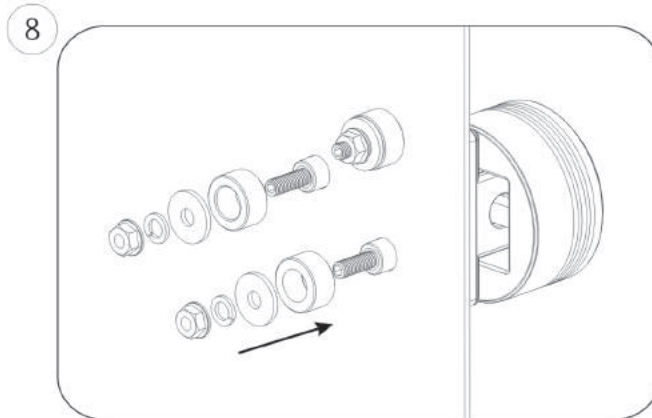
Paint the holes to anti-rust



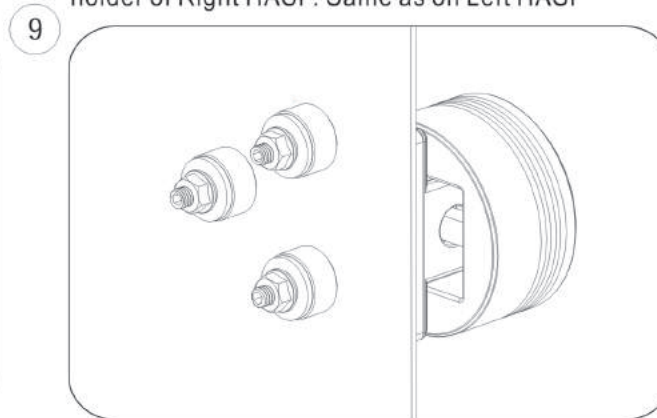
Use M6 Hex. Key to screw M6\*25mmL into the screw holder of Right HASP. Same as on Left HASP



Fit the 3 screw holders of Right HASP into the holes



Assemble in order by the showing materials



Screw tightly and it's Done!  
Same steps for the Left HASP